



# Service Line

Volume XVII Issue 3

October 27, 2011

## Letter from Cathy

Dear Side Out Club,

Well, believe it or not we are already into the second half of the Big Ten season as November rapidly approaches. Saturday we will play our last home contest until November 18<sup>th</sup>! Anyway, last night we secured our sixth victory in the Big Ten and the 17<sup>th</sup> overall. I have been told that the victory last night ensures us NCAA tournament eligibility... Honestly though, I am only looking at two things; how are we playing currently and who is our next opponent? I tend to have a little tunnel vision and want to keep us all on the task at hand! HaHa! As you may or may not know, Saturday we host #11 Purdue at **6:30pm**. Please get here early as there is also a Hockey game at 7:05. We really need your support and appreciate your attendance immensely!

Although the road ahead is challenging, our team has and will continue to raise their level to answer the call. As usual there are no weekends off and we need to prepare for every team's best! Freshmen Jazmine White and Kori Moster have made a huge impact in our overall growth and are continuing to adapt to the speed of the Big Ten.

Taylor Galloway is finally getting healthy and we will be happy to get her into practices soon!

We hope you can join us Saturday as it is a very important match for us!!! Again, thank you for all your support. Our team is very lucky to have you behind us!



### In This Issue:

- Upcoming Promotions/ Marketing
- Conference Review
- Thanks Chris, Al, and Renee!



@MichStVB

Letter from Cathy 1

MSU 1st Half Review 2

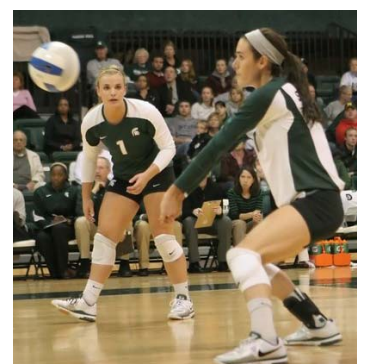
Big Ten 1st Half Review 3

Promotions 4

Q/A and Announcements 5

### Remaining Home Schedule

- October 29—vs. #11 Purdue 6:30pm
- November 18—vs. #3 Illinois
- November 19—vs. Northwestern
- November 26—vs. #8 Penn State



## MSU—1st Half Review

Now that we have completed the first half of the Big Ten Season, we find ourselves in the middle of the pack tied for 5<sup>th</sup> place in the conference having split each of the first 5 weeks of the schedule. In a conference that boasts nine teams in the top 50 of RPI (Strength of Schedule), six in the top 20, our conference standing is respectable. We feel confident that we are still within striking distance of where we need to be as tournament time approaches and are optimistic about our continued ability to improve in the second half. The win over #21 Michigan last weekend was the first step in retaining the State Pride Flag we captured a year ago and was an electric atmosphere! The team hopes to use last night's win against Indiana as a springboard of what's to come in the second half.

Several players have stepped up for us and we'll need that to continue as we look to them more down the stretch. Jenilee Rathje is 2<sup>nd</sup> in the conference in kills/set (4.74) and points/set (5.06), Kyndra Abron is 10<sup>th</sup> in kills/set (3.41), and Kori Moster has taken over the conference lead in digs/set (5.00) and sits at 9<sup>th</sup> in aces/set (.28). As a team the Spartans are second in the conference with a .241 hitting efficiency and rank in the top half in assists, kills, and service aces.

The remainder of the schedule presents some challenges to the Spartans, and includes 3 Wednesday matches of which two are on the road. When the schedule for the week is Wednesday/Saturday, the team is forced to alter their preparation/recovery/travel regimen from the traditional Friday/Saturday matches. For example, last night's 8pm match vs. Indiana will require the team to have a low-impact day on Thursday in order to give their legs and arms ample recovery time. That gives only 1 full-speed day (Friday) to prepare for the Saturday's match. Typically Sunday is a complete day of rest, Monday is low-impact and Tuesday, Wednesday, and Thursday are full speed days. The Spartans will also hit the road for two consecutive weekends as we take on Iowa, Nebraska, Minnesota, and Wisconsin the first two weeks of November. Those of you that have seen us play on the road know the



Don't forget about us! Wish us good luck and good health and always remember that you can follow us on BTN, [BTNnetwork.com](http://BTNnetwork.com), and Twitter!

## B1G Conference—1st Half Review

#1 Nebraska (10-0) and #3 Illinois (9-1) are leading the way in the conference this season and as many of you know, were both pushed to the 5-set limit in our round one matchup. We have the rematches circled on our calendar, but first things first... In last week's action, Nebraska defeated Illinois in Lincoln, NE in what may turn out to be a decisive match to sort out the conference champion. The two teams will NOT play each other the second time around due to the conference schedule being altered to an incomplete double round robin - the same reason the Spartans will square off against Penn State and Ohio State only once this year. With the win, the Huskers moved to a #1 ranking nationally - the 3<sup>rd</sup> Big Ten Team to occupy the top spot this season along with Penn State and Illinois.



#8 Penn State is sitting in 3<sup>rd</sup> place (dropping matches to Nebraska and Illinois) and cannot be counted out just yet. The young Nittany Lions are improving since the start of the conference schedule which opened in a 5<sup>th</sup> set loss in Nebraska and will look to make a run in the second half - until the final match of the year when they visit East Lansing. #11 Purdue is quietly occupying the fourth spot in the conference. Their consistent play throughout the year has kept them in the Top 15 led by Ariel Turner; however we are preparing to knock them down a peg or two this weekend when they visit the Jenison Field House.

After Purdue it's a 4-way tie with MSU, Wisconsin, Minnesota, and Ohio State at the break. Our Wednesday night victory over Indiana has us a game up on the pack at 6-5 and we look to pull away this weekend vs. #11 Purdue. The first couple weeks of the second half will prove to be vital in creating separation between these teams. All 4 teams are good enough to have a final kick of 7-3 or better if they get hot! Regardless of what we THINK might happen in the second half, we'll likely be wrong as conference parity is at an all-time high. Penn State went 5 with Northwestern, Indiana went 5 with Purdue, MSU went 5 with Illinois and Nebraska. It just goes to show you that you better come ready to play each and every night in the Big Ten no matter how great or inconsistent the other team might be. It would not surprise me if our conference champion had 2-3 losses when all is said and done. We look forward to the second half and hope you'll be there to cheer us on!



## Pajama Night

MSU volleyball hosted its second annual Pajama Night to raise awareness for Childhood cancer during our match vs. the University of Iowa. The match featured facts about the harsh realities children with cancer face and included pictures of children that have battled this disease placed all around the arena. Hundreds of people came to the game in their pajamas to show their support and that number included both Michigan State's and University of Iowa's coaching staffs. The event was a memorable one as fans were able to watch the Spartans dominate the Hawkeyes with a 3-0 victory. Leading the charge for the Spartans were Jenilee Rathje with 12 kills, and with a breakout match Kelsey Kuipers had 10 kills out of 11 attempts to help the Spartans make easy work of the Hawkeyes.

## Jam Jenison 2011

One thing you can be sure of, anytime MSU volleyball and U of M meet you are in for a battle. This time definitely did not disappoint. The University of Michigan came into the match ranked #21 in the country and posted a 15-5 record. When the Wolverines arrived they were greeted by over 3,500 fans, the full 150 piece Spartan band, and a rowdy student section. There was definitely a sense of excitement as fans were treated to a neck and neck battle with the Spartans coming out victorious 3-1. Kori Moster set the pace defensively with 24 digs, Jazmine White chipped in with 5 blocks, and Jenilee Rathje led the offensive attack with 21 kills. Kori was named co-freshman/co-defensive player of the week in the conference for her efforts in the Michigan/Ohio State matches.

## Military Night

In order to honor those that have sacrificed and served our country the MSU volleyball program held a night, last night against Indiana, to highlight those members in our community. Although it was not as greatly attended as we had hoped, the Air Force ROTC color guard presented the flag for the national anthem, and members of the various services were invited to come in their uniforms. The Spartans were able to hold off the Hoosiers for a 3-1 victory. Offensively, the Spartans were led by Jenilee Rathje with 21 kills, and were helped by career highs by Alexis Mathews with 13 kills and Jazmine White with 7 kills. Kristen Kelsay set the pace with 29 assists, and Kori Moster and Carli Weiler held down the back court with 16 and 12 digs respectively.



## Question/Answer



Q: The Spartans have these great, new 'K' signs for us to wave when our team gets a kill, but what is a 'kill'?

A: Great question and so glad you have noticed the new signs! A 'kill' in volleyball refers to any time that a team attacks the ball over the net and the other team cannot return it. It is most often used in reference to a hard driven spike, but can also result from a tip or even a pass! A kill does not, however, result from an unpassable serve – that is an 'ACE'. Statistically speaking, the kill definition is as follows: **“A kill is awarded to a player any time an attack is unreturnable by the opposition and is a direct cause of the opponent not returning the ball, or any time the attack leads directly to a blocking error (including a net violation) by the opposition. A kill leads directly to a point. When a player is awarded a kill, the player also is awarded an attack attempt.”** Now you know when to wave those 'K' signs - each time a Spartan gets a 'kill'!

### October 29, 2011

Match vs. #11 Purdue—6:30pm

Foam Helmet Giveaway

### November 17, 2011

Coaches Luncheon at Hall of Fame Café, Preview Illinois, NOON

### November 18, 2011

Match vs. #3 Illinois 7:00pm

**Friday 4-pack**—4 tickets, 4 drinks, 4 pretzels, hot dogs, or nachos for \$20.

**End Violent Encounters (EVE)** - Bring 2 cans of food or a new or gently used coat and be admitted free.

**Church Night**—If your church is interested, please contact Jen at (517) 353-1756.

### November 19, 2011

Match vs. Northwestern TBA

**Alumni Night**

**SOC Recognition Night and Pizza Party**

**End Violent Encounter (EVE)** - Bring 2 cans of food or a new or gently used coat and be admitted free.

**Football Ticket Stub Night**—Get in free with your football ticket stub.

**Church Night**—If your church is interested, please contact Jen at (517) 353-1756.

**Post-Match Team Autographs**

### November 26, 2011

Match vs. #8 Penn State 6:30pm

**Senior Night**—Recognition of seniors on their last home game.

**SOC Pizza Party**

**Post-Match Senior Autographs**





## SIDEOUT CLUB NEWS

### Thank You Chris Wolfe!



A big thanks to Chris Wolfe for keeping the SOC website up to date with great information on the happenings of the MSU volleyball program and information on SOC events --- check it out at [msusideout.org](http://msusideout.org)



- |                        |                         |
|------------------------|-------------------------|
| <u>President:</u>      | <i>Cheryl Bartholic</i> |
| <u>Vice-president:</u> | <i>Marge Bossenbery</i> |
| <u>Treasurer:</u>      | <i>Julie Morgan</i>     |
| <u>Secretary:</u>      | <i>Shirley Garrity</i>  |
| <u>Board Members:</u>  |                         |
| <i>Jim Constandt</i>   | <i>Pete Cronk</i>       |
| <i>Susan Epple</i>     | <i>DeAnna Fenech</i>    |
| <i>Dave Martz</i>      | <i>Cathy Richter</i>    |
| <i>Lynda White</i>     | <i>Tim Salinas</i>      |
| <i>Carole Brogan</i>   | <i>Rachel Walsh</i>     |

All the pictures in this newsletter are courtesy of Al and Renee Schmitzer—they look great!

### *The Service Line*

*MSU SideOut Club, P.O. Box 80491, Lansing MI 48908*

**Website: [www.msusideout.org](http://www.msusideout.org)**

*Website: [www.msusideout.org](http://www.msusideout.org)*